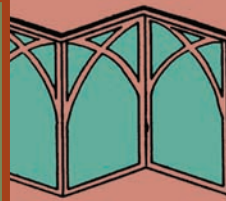


BERKELEY ARCHITECTURAL HERITAGE ASSOCIATION



THE BAHHA NEWSLETTER



NO. 152

MIDWINTER NUMBER

WINTER 2018

Winter Walking Tours — see back cover



The Story of Architect C. M. Cook — see page 6



J. A. Marshall House

THE BAH NEWSLETTER

NO. 152

WINTER 2018



Alta Vista Apartments

C O N T E N T S

BAHA Winter Lecture _____	page 2	Upcoming Events _____	page 9
Message from the President _____	page 3	Campanile Way Update _____	page 9
New Landmark Threatened _____	page 4	Gibbs Smith, In Memoriam _____	page 10
Berkeley's Latest Landmark _____	page 5	Membership Application _____	page 11
The Story of Architect C. M. Cook _____	page 6	Winter Walking Tours _____	page 12

Cover: Marshall Block (C. M. Cook, 1904) southwest corner Bancroft and Telegraph. 1905 postcard courtesy Anthony Bruce; Above left: Marshall House (C. M. Cook, 1904), 2740 Telegraph Avenue. Architect and Engineer, 1905. Right: Alta Vista Apartments (C. M. Cook, 1906), northeast corner Bancroft and Telegraph. Postcard, courtesy Daniella Thompson.

- BAHA's website includes notices of events, a list of Berkeley landmarks, illustrated essays, and more: berkeleyheritage.com/
- BAHA also maintains a blog where stories and notices of immediate interest are posted in a timely manner: baha-news.blogspot.com/

BOARD OF DIRECTORS
 Steven Finacom,
President
 Leila Moncharsh,
Vice-President
 Carrie Olson,
Secretary
 Stephanie Manning,
Treasurer

Jane Edginton
 Mariana Gallardo
 Neysa Garrett
 James Grandison
 Ann Killebrew
 Neale McGoldrick
 Jane McKinne-Mayer
 Arlene Silk

EXECUTIVE DIRECTOR
 Anthony Bruce

PRE-CONTACT LANDSCAPE A BAH WINTER LECTURE

On Thursday, Feb.22, 7pm, BAHA will co-sponsor with The Ecology Center a lecture, "Pre-Contact and Wild Landscape of the East Bay." **Daniel Gluesenkamp**, Executive Director of the California Native Plant Society, **Vincent Medina**, and **Kevin Dixon**, naturalist for the East Bay Regional Parks, will speak. The event promises to be a wonderful exploration of California's landscape from ancient times up until the coming of Europeans and how we might re-create some of that with the use of indigenous plants, how we might see pockets of it even today in various hidden places.



Native flora at the site of the Berkeley Shell-mound. Stephanie Manning.

The event will be held at The Ecology Center Store, 2530 San Pablo Avenue, Berkeley. Tickets are \$10 and can be purchased online from BAHA at berkeley-heritage.com or by mail to BAHA, P. O. Box 1137, Berkeley 94701.

space may sell out quickly, however, tickets might be available at the door.

People attending may park in the Bank of America lot next to Ecology Center. Entrance to parking lot is on Tenth Street.

Reservations are recommended as the

You will want to come to this special event on our landscape!

PRESIDENT'S MESSAGE

BAHA is a robust organization in important respects. In our fifth decade, we have over 900 dues-paying members, a well-established program of activities throughout the year, an extensive research archive and website, a historic home as headquarters, and dedicated and accomplished staff who have been with us since the beginning.

During the year and a half I have been president, however, I have often wished for a more direct way to involve additional members in the organization as periodic volunteers. Right now, we have only two ways of contacting members to ask them to volunteer: ask individuals we already know who have volunteered in the past, or broadcast a wide appeal to the membership through this newsletter, our Facebook page, or e-mail list.

These approaches are either too big (we don't need to send out an appeal to several hundred people asking for a few volunteers for a small event) or too small (we go back to the same people over and over again for volunteer help). With your help, I would like BAHA to have a useful "in-between."

If you would like to support BAHA with occasional volunteering, when you have the time and interest, please fill out the enclosed volunteer slip and send it back to us. We'll use it to build an e-mail list of prospective volunteers. Then, in general, when there's an event that needs some volunteers, we'll send out a note to this list, not to the whole BAHA mailing list. As always, it will be your choice whether or not to respond for a particular event.

What events are coming up on the BAHA calendar that will need volunteers?

Starting this month (February) we're having four weekend walking tours (see back cover). Each tour will need a couple of same-day helpers, who can attend for free.

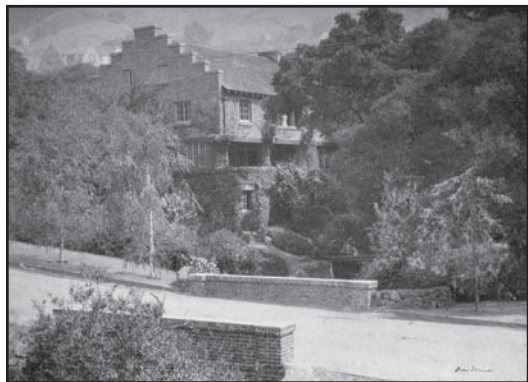
In April, we have our booth at the Bay Area Book Festival on April 28-29. This has proven to be a great outreach and sales opportunity for BAHA, and another eight or ten volunteers to help staff the booth for a few hours apiece would make a world of difference.

May 6 is our regular house tour, where we can always use volunteers who sign up in advance. And on May 24 we'll have our Annual Meeting and Preservation Awards, where volunteer help is needed.

Later this spring we're planning the first annual Susan Dinkelspiel Cerny memorial lecture.

In the summer we plan to do another round of walking tours.

And the Fall and 2019 will bring a new series of activities. Let us know if you can volunteer!



*Steven Finacom,
BAHA Presiden*

GIFTS TO BAHA

- From **Chissie Chamberlain Mlotok**: a large photo of the Moody House (A.C. Schweinfurth, 1896) taken by Berkeley photographer Oscar Maurer.
- A monetary gift from **Jim Sharp**.

NEW LANDMARK THREATENED

LAST YEAR we reported on the designation by the Landmarks Preservation Commission of the University Laundry building, an 1897 Victorian built by Olive Stewart at 2526-30 Shattuck Avenue (corner of Blake Street). It has a storied history as the home of five families who jointly operated a laundry business there as part of Berkeley's thriving pre-World War II Japanese-American community. It is also one of the very few 19th-century commercial buildings of its type surviving south of Downtown.

The venerable two-story building with commercial spaces downstairs and rental rooms upstairs is currently covered with stucco and has lost much of its Victorian trim and detail. However, the upstairs windows, wood siding beneath the stucco, and overall form and structure of the building remain. It is eminently restorable; other similarly altered Victorians have been restored to handsome condition in Berkeley in recent years.

The Commission recognized this in honoring the building with City Landmark status. The building was also recognized in 2006-07 by the respected California's Japantowns project that documented the surviving buildings of pre-World War II Japanese-American communities in California, including Berkeley.

But the landmark designation has now been appealed to the Berkeley City Council by a group of pro-development lobbyists who show up at public meetings, often allied with for-profit developers, to support massive up-zoning and high-density development. Their appeal letter mocks the building as an "unworthy monument."

The real interest of the appellants appears to be in high-density development on the block and they call for demolition of the University Laundry and construction of a five-story building there.

Ironically, the building owners themselves did not oppose or appeal the landmarking, and have recently extensively renovated the building.



The University Laundry building. Courtesy Uchida Family.

In 1941-42 the United States government uprooted Berkeley's entire Japanese-American community in a week, sending some 1,300 residents, the majority of them American-born citizens, into forced imprisonment. Now, a group that places high-density development above any other consideration wants to erase one of the key buildings used by Berkeley's Japanese-American neighbors and the only one so far given landmark status.

If you wish to help preserve the landmark status of the University Laundry building as a part of Berkeley's less-recognized cultural and architectural history, please write to the Berkeley City Council and ask that they reject the appeal and uphold the decision of the Landmarks Preservation Commission.

Write to council@cityofberkeley.info and ask that your letter be placed in the agenda packet for the April 3, 2018, appeal hearing. If you are a Berkeley resident, please also consider contacting your Councilmember directly and telling them that this issue matters to you.

You can read the landmark application and related reports online. Look up the Landmarks Preservation Commission home page, find the agenda link for the March 2, 2017, Commission meeting, and click on the link to 2526-2530 Shattuck Avenue under Action Items.

BERKELEY'S LATEST LANDMARK

At the February 1, 2018, meeting of the Landmarks Preservation Commission there was a unanimous vote to designate 2500 Shattuck Avenue, the Mattern Building, as City of Berkeley Structure of Merit No. 328.

The building, which housed a Radio Shack corner store in recent years, was constructed in 1923 by George A. Mattern, a Berkeley “capitalist” with interests in a number of business ventures including the Pfister Knitting Company. The designer, and Mattern’s neighbor in what is now the Willard Park neighborhood, was Louis Upton, a successful Bay Area architect best known for his high-end residences for the wealthy. Upton later designed a Tunnel Road home for Mattern.

Costing \$30,000 to build, the two-story structure started out with four storefronts on the ground floor and apartments above. The building anchored an important corner in “Dwight Way Station” across the street from James L. Barker’s handsome brick Barker Building, and it shares a street frontage with several 19th- and early 20th-century commercial buildings, including the University Laundry building (City of Berkeley Landmark No. 326).

The designation was, in part, for the cultural value of the building as a reminder of the era when the banking industry was beginning branch banking. Prior to the early 20th century, most commercial banks were home-grown affairs with a single location serving just one town, or a small region. Then, A.P. Giannini and his Bank of Italy started in San Francisco, radically changed the paradigm by creating a regional, then statewide, then national, network of bank branches. Other banks followed suit and the financial world was transformed.

The Mattern Building was purpose-built to house one corner bank, a branch of the Berkeley Bank of Savings and Trust Company that was headquartered a few blocks north in Downtown. In 1936, the corner bank space was converted



*The Mattern Building, 2500 Shattuck Avenue.
Steven Finacom, 2017.*

into a branch of the Bank of America. In 1946 the space was further remodeled and the bank grew to absorb two of the other storefronts.

Bank of America closed the branch around 1969, and a branch of the rapidly expanding Radio Shack chain moved in, remaining there until a few years ago. The corner storefront is now vacant. The adjacent storefront on Shattuck retains parts of its original commercial facade including original clerestory windows, and, since 1976, has housed restaurants, including the Calico Cat Cafe, Guerrero’s Mexican Food, and Frausto’s, which operates there today.

Much of the visual appeal of the Mattern Building lies in its handsome—and largely intact—pressed brick exterior. The textured buff brick is a triumph of skilled craftsmanship, laid in intricate geometric patterns. Unlike many local brick buildings of the era, it has never been painted. The terra cotta surround of the former corner bank sports whimsical column capitals with an interlocking “BA” motif. In some future remodel the corner store exterior could be restored to something resembling its 1946 glory when it proudly housed the neighborhood bank branch.

THE MYSTERIOUS C. M. COOK

by

DANIELLA THOMPSON



Architect C. M. Cook

IN 1904, upper Telegraph Avenue underwent a character-changing transformation. The stretch between Bancroft and Channing ways, then an elegant residential enclave dotted with imposing mansions, was invaded by commerce. The person responsible was the developer John Albert Marshall, who dared to defy the resident millionaires by erecting the neighborhood's first mixed-use building.

“Ground was broken to-day for a three-story business block at Telegraph avenue and Bancroft way, to be erected by J. A. Marshall at a cost of \$40,000. Five stores will face Telegraph avenue and two on Bancroft way,” announced the *San Francisco Call* on October 17. Construction of the Marshall Apartments was the shot across the bow that set the millionaires fleeing.

MARSHALL'S ARCHITECT

The architect of the Marshall Apartments was one C. M. Cook, who had his initial foray into Berkeley two years earlier. Cook's first project here, in 1902, was a pair of speculative cottages, built for a San Francisco realtor at 1634 Harmon Street. By 1903, Cook was designing rows of speculative houses for J. A. Marshall—first a group of three on Bancroft and Grove, then six adjacent houses on Telegraph and Carleton. In October 1903, Cook embarked on his own speculative venture, a house boasting a two-story-high Greek Revival portico at 2421 Oregon Street.

Many projects followed, a goodly number of them designed for Marshall. The best-known survivor is probably the Marshall House that still stands at 2740 Telegraph Avenue and is now called the Rose Garden Inn.

Within less than a decade, Cook's buildings

proliferated through Berkeley. Many of those structures survive, and a few have been designated City of Berkeley Landmarks.

It all came to a stop in 1910, and the architect remains a cypher—two initials and a short surname. The C. M. Cook mystery is all the deeper, since his 1940 U.S. Census record reveals that the architect's education did not go beyond the fourth year of high school. Who, then, was Cook, how did he become a sought-after architect, and what led to his sudden disappearance following a brief, meteoric career?

IT ALL BEGAN IN SACRAMENTO

Christopher Midler Cook was born on December 9, 1874 in Sacramento. His father, Allen Aaron Cook, better known as A. A. Cook (1832–1899), was a prominent architect who designed many important public and commercial buildings around the state. At least six of his buildings are listed in the National Register of Historic Places.

Like his son, A. A. Cook never attended a university. He began as a carpenter's apprentice in



An early Berkeley house, designed by Cook in 1903, at 2421 Oregon Street. Donogh File photo, 1939, BAHA Archives.



A typical group of J. A. Marshall speculative houses designed by C. M. Cook. These were built on Telegraph near Derby in late 1904. Marshall family photo, BAHA Archives.

Albany, NY. After three years of apprenticeship, he relocated to Kalamazoo, Michigan, where he engaged in contracting and building. In 1861, he moved to Missouri, where the Civil War draft registrar listed him as a carpenter in Johnson Township. A. A. Cook moved several more times and eventually gave up contracting, devoting his whole time to architectural design. In 1870, he married, came to Sacramento, and quickly assumed a leading position among local architects.

Christopher was the second of A. A. Cook's six children, four of whom were girls. Nothing is known about his education. In his teens, he was an amateur bicyclist, racing with the Capital City Wheelmen. Later he sat on the State Committee of the YMCA.

We can only assume that Christopher learned building design at his father's knee. By October 1898, when he was 23 and married Louise Hill La Motte of Sacramento, Christopher was already living in San Francisco. His father died a few months after the wedding, and the young couple settled in West Oakland. In June 1900, the U.S. Census found them lodging at 914 10th Street,

in the home of a school teacher and his actress daughter, who also shared their rented premises with an "artist in china" and a piano teacher.

SUCCESS IN THE EAST BAY

C. M. Cook opened an independent architectural office in downtown Oakland. His practice included projects in San Francisco, Oakland, and Berkeley. The vast majority were single-family residences, designed in the prevailing styles of the day: Colonial Revival "Classic box," High-Peaked Colonial Revival, Arts & Crafts, and Mission Revival.

As his reputation grew, Cook was engaged to design larger buildings. In 1905, he produced the two-story, Colonial Revival Clephane Building at Adeline and Emerson streets. The Clephane was designated a City of Berkeley Landmark in 2006.

Working for Marshall again, in 1906 Cook designed a five-story, 200-room hotel with a roof garden on the northeastern corner of Telegraph Avenue and Bancroft Way. The finished building turned out to be the five-story Alta Vista Apartments, with 23 residential units above six storefronts.

Cook repeatedly utilized the Mission Revival style in his apartment building designs. A prime example was the two-story, four-flat building for Albert S. Conner, constructed in 1908 on the northwest corner of Dwight Way and Bowditch Street. The Conner Flats were extravagantly adorned with large, bell-shaped parapets, some of them fenestrated, and an abundance of detail on the street façades. A year later, Cook designed another apartment building with a heavily ornate façade, the Castle Crag at 2525 Durant Avenue. Of all the architect's fabled Southside apartment buildings, this is the lone survivor, albeit with a much simpler, Moderne façade.

TROUBLE BREWS FOR THE ARCHITECT

The first sign of trouble surfaced in June 1909, when a client's lawsuit charged the architect with fraud, negligence, and lack of skill. Not only did the house cost more than stipulated in the contract, but it did not come up to specifications when finished. Moreover, accused the client, "Cook permitted contractors working under him to put in inferior materials" and was also "guilty of getting a 'rebate or bribe' from the California Standard mill company for placing a contract for the mill work on the house with that company." The suit may have been settled out of court, for nothing more was reported on it in the press.

The real bombshell landed in May 1910, when Cook was arrested on a charge of complicity in the filing of a fraudulent deed. It was said by police that Cook had been in some financial difficulty and desired to raise money to protect his interests. Court proceedings revealed that the architect forged a signature on



MISSION TYPE OF TWO-STORY, FOUR-FLAT, 22-ROOM BUILDING OF A. S. CONNER, LOCATED AT DWIGHT WAY AND BOWDITCH STREET. C. M. COOK, Architect.

Oakland Tribune, March 1, 1908.

the deed. In September 1910, he was sentenced to five years in San Quentin State Prison, where he was paroled two years later and discharged in May 1914.

THE QUIET AFTERMATH

Following his discharge, Cook and his wife settled in the Sunset District of San Francisco, living in the same modest house from 1914 until Cook's death in 1942. Cook continued to list his occupation as architect, although nothing is known of his work during the last three decades of his life.



The Judge Wehe House, northwest corner of Carleton & Telegraph; part of a group of six Marshall-built houses designed by Cook in 1903. Postcard courtesy Anthony Bruce.

WEST BERKELEY ART EXHIBIT

LAST YEAR, local artist Barbara Tapp spent thirty-one consecutive days doing *plein air* watercolors on the streets of West Berkeley. She got to know residents, street recyclers, and other neighborhood regulars, and heard their stories.

She painted not only picturesque older buildings, but the juxtaposition of venerable structures with new construction, vacant buildings, graffiti, and industrial scenes in a neighborhood in transition and under development pressure. As an architectural illustrator, Barbara has created memorable images for countless Berkeley real estate brochures and flyers.



My Backyard by Barbara Tapp.

The impressive and expressive watercolor results are on display through March 3 at the Holton Framing Gallery at the corner of Addison and Fifth Street. Drop in Tuesdays through Saturdays, 11-6, to see Barbara Tapp's art, as well as other beautifully framed paintings by other artists. See **holtonframes.com** for more information, or **barbaratappartist.com**

BOOK FESTIVAL - CAN YOU HELP BAHA?

BAHA will once again have a booth at the Bay Area Book Festival. Mark your calendars for April 28 and 29 for this engaging event in Downtown Berkeley with scores of author talks, organizations, and vendors.

We are looking for help in two areas. First, send us your suggestions of local authors to feature at our booth, shared with the Berkeley Historical Society. Do you know—or are you—someone who has written a book (history, fiction, biography, architectural, memoir in particular) that has some Berkeley connection? Let us know! Contact Phyllis Gale at **p2gale@gmail.com**.

Second, we will need about a dozen people to volunteer to help staff the booth. The duties are easy and simple. Let us know if you can spare a couple of hours of your time to help, between 11 and 6 on that weekend.

CAMPANILE VIEWS STILL ENDANGERED

THE historic view down Campanile Way is still critically endangered by an 18-story luxury housing tower proposed for 2190 Shattuck. It would block the iconic view of the Golden Gate from the center of the UC campus. The Environmental Impact Report on the project concluded the building would block a high percentage of the view, but the project is still moving its way through the City's approval process.

Also, the landmark designation for Campanile Way is still in question. Developers have been attempting to stop it. If you haven't already, write to the Landmarks Preservation Commission urging them to designate Campanile Way as a historic resource. The vote is scheduled for the April 5 meeting. Send letters before the end of March to **FCrane@cityofberkeley.info** for their agenda packet.

The Zoning Adjustments Board will separately vote about the permits for 2190 Shattuck this spring or summer. A date is not yet designated, but you can write to the ZAB and ask them not to approve a project that is too tall and detrimental and will intrude on the view. A big, but not too tall, apartment building can still be built there and preserve the view. Write to the ZAB at **zab@cityofberkeley.info** and ask that your letter be included in the packet for the next meeting where 2190 Shattuck is reviewed.

IN MEMORIAM: GIBBS SMITH

By Mark Anthony Wilson

THE MOTTO of the publishing house founded by Gibbs Smith in 1969 said it all:

To Enrich and Inspire Humankind.

Gibbs Morgan Smith died on October 28, 2017 at the age of 77, in Ogden, Utah. He was one of the last members of a rare and vanishing breed: a publisher who maintained a personal touch with writers, and believed in giving new writers the opportunity to produce well-written and beautifully illustrated books on subjects ranging from architecture, to interior design, to nature's beauty, to cooking and children's books. During his 48 years as head of Gibbs Smith Publishing, his company published nearly 2,500 titles, of which over 640 remain in print today.

Gibbs was born in Oakland in 1940. His family moved to Utah in 1947, and he got a BS and MS in history from the University of Utah, and then did graduate work on history and architecture at UC-Santa Barbara. His master's thesis on labor activist Joe Hill was published as a book, and was later the basis for a movie. He and wife Catherine launched Peregrine-Smith Publishing in Santa Barbara, then moved the company to Utah in 1972. Gibbs was also a painter, and his oil paintings of book stores around the world graced the covers of the company's catalogs. He loved train trips, and enjoyed hiking on nature trails with fellow Sierra Club members all over the United States. One of Gibbs' dreams was to found a writers' retreat in the

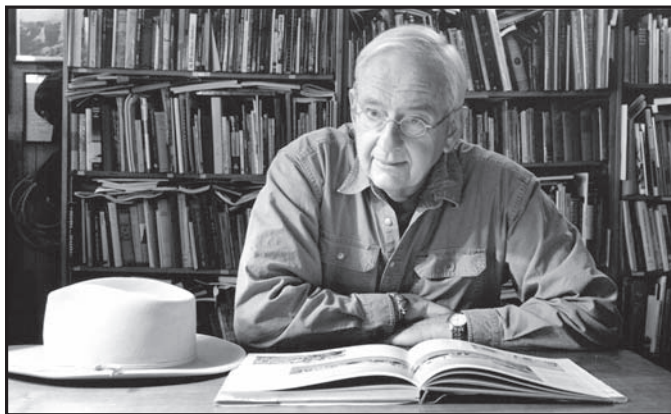
red rock country of Utah, and this project is now under construction in Zion National Park.

Gibbs also had a strong connection to the Bay Area. He made frequent trips to the East Bay to meet with local writers, and he maintained an apartment in the Berkeley City Club where he stayed when he was in town. He was often to be found at BAHA's office on Durant Avenue, doing research and talking with staff about local history. Whenever a new book by a Bay Area author was released by his company, he would offer to treat the author and photographer to a superb lunch at the Berkeley City Club to celebrate.

I first got to know Gibbs in 2005, when he met with me to ask if I'd be interested in "writing the definitive book on Julia Morgan." It was an honor to be asked to carry out such an important task, and an inspiration to hear him talk with such passion about Julia Morgan's legacy, which was something I'd been passionate about since I'd first seen her buildings as an undergraduate at UC-Berkeley in the early 1970s. After that book was published in 2007, Gibbs took a personal role in getting his editorial board to agree to publish two more proposals I sent him, on Bernard Maybeck and Frank Lloyd Wright. In the meantime, he asked longtime BAHA member Susan Cerny to research and write the comprehensive volume, *An Architectural Guide to San Francisco and the Bay Area*, which was published in 2007, and remains the only authoritative

guide book on historic buildings throughout the Bay Area.

Gibbs Smith's rare combination of warmth, passion and personal commitment to the projects he supported and the authors he worked with made his publishing legacy one that is treasured by all who knew him. His presence will be sorely missed in an industry that is increasingly concerned with fleeting trends in the market, so-called "star power," and financial spread sheets. Gibbs understood that an appreciation of the arts, history, and world cultures enriched all our lives, and that these were timeless values that deserved to be promoted by publishers.



Gibbs Smith. Courtesy Gibbs Smith (publishing house).

WELCOME NEW MEMBERS

BAHA welcomes the following people who have joined BAHA since the last Newsletter went out.

Philip Allen	Ann Plant
Sherry & Jack Delo	Caroline Purves
Sally Dorfman	William Roberts
Jeff Gallup	Kieron Slaughter
Kelly Hammargren	Denise Taylor
Lisa Houston	CONTRIBUTING
Emily Elizabeth Jones	Mahnaz Khazen
Sue & Nick Jones	Sally Miller
Kathleen McDougall	HONORARY
Mark Pettigrew	Sasha Berleman

AND RENEUED MEMBERS:

Susan & Jim Acquistapace, Jane Alexiades, Annalee Allen, Judy & Gary Amado, Daina Apple, Pam Atkinson, Leslie Avant,

Eleanor Bade, Julia Bader, Andrew Baker & Laurie Case, Eric Baker, Bancroft Library, David Bank, Jane Barrett & Morton McDonald, Nina Barton, Joan Finton Baumrind, Arlene Baxter & David Mostardi, Jonathan Beck, Sally Beck, Diana & Frank Beer, Don Bell, Beverly Bense, Jennie Best & Richard Park, Steve Binder & Barbara Anscher, Priscilla Birge, Alice & Bruce Bishop, Sarah Bishop, Eric Bjerkholt, Annamaria Blower, Stephen Born, Mr. & Mrs. David Bradford, Fadhilla Bradley, Randal Brandt, Carol Breslin, Robert Breuer, Kay Bristol, Robert Brokl & Alfred Crofts, Zeldia Bronstein, Michael L. Brown & Harold F. King, Jr., Rob Browning & Linda Maio, Anthony Bruce, Lisa Bruce, Charles Bucher, Christopher Buckley, Stafford

IN MEMORIAM

Paul Grunland	Nicholas T. Prepoues
Helen Lore	Ann Reid Slaby
Tom McAlone	Gibbs M. Smith
Marcia Morgan	Ladonna Stoppel
Ariel Parkinson	Alex Zwerdling

Buckley, Georg Buechi, Mary Burkhard,

Nancy Callahan, Fran Cappelletti, Joanne Carder, Steve Carlson, Patricia Carroll, Jeanine Castellolin, Ann Maria Celona, Rebecca Chambers, Carolyn Chapin, Fran Chiappetta, Haidieh & Jeffrey Chew, Lisa & Tony Ciani, Karen Cilman, Jay Claiborne, Courtney Clarkson, Marilyn & Jack Clifton, Barbara Coats, Murray Cohen, Steven Cohen, Celia Concus, Chris Cook, Jerry Cooper & Carol Bier, James Corbett, Rosemary Corbin, Larry Cotter, Janice Craik, Tina & Travis Crawford, Elizabeth Crews, Renate Crocker, Lynn Crosby, Patricia Cullinan, Maria Curtis, Lincoln Cushing & Nina Robinson,

Tom Dalzell, Harry Delmer & Deborah Hecht, Rajiv Dholakia, Amy di Costanzo, Francine di Palma, Leslie Dixon & Tom Ropelowski, Doe Library, Riley Doty, Steven Douglas, Ken Duffy, Katherine B. Dunlap,

Leslie Easterday, Merle Easton, Patricia Edwards, Sylvia Egan, Joan Embree, Richard Engle, John English, Jacque Ensign, S. Entwistle, Cindy & Dan Erceg, Virginia Erck, Fred Etzel, Karen Euston,

Anita Feder-Chernila, Tamoko & John Ferrari, Janet Ferreira, Anne Feste, Richard Finch, Mary Ellen Fine, Harriet Finkelstein, Jim Fisher, Bruce Fodiman, Trudy Forte, Jennifer Fortson, Suzanne Fox, Nancy Francis, Rocky Francis, Margaret Freeman, Glenda Freberg, Beverlee French & Craig Rice, Judith H. Frisk,

Carol Gamble & Russ Richards, Gale Garcia, Robert Geering, Theresa Gerritz, Elizabeth Giarratana, Judith Glass, Jean Gold, Tanya Goldsmith, Susan Goldstein, Foster Goldstrom, Bob Gomez, Evelyn B. Goodman, Jane Goodwin, Diane & John Gossard, Gretchen & Dick Grant, Kelli Green, Gretchen & Thomas Griswold, Bill Grove, Dian Grueneich, Peggy & Paul Grunland, John Gussman,

Eric Haesloop, Bryan Haggerty, Ellen Hahn, Bronwyn Hall, Marygracia Hall, Elaine & William Halnan, Daryl Halverson, Katherine Hamburger, Toni Hanna, Ann Harlow, Mark Harpainter, Jeanne Harrah-Johnson, Kate Harrison, George Harter, Carolyn & Larry Hartsough, Holly Haugh, Jane Headley, Harvey Helfand, Becky Hemann, Louise Hendry, Paul Henning, Richard Herr, Randi Herman, Dixie Hersh, Fred Hertz & Ran Langenbach, Harry Hicks, Douglas Hill, Jane

Hoberman, Jerri Holan, Scott Holderer & Roger McCla-nahan, Rosalie Holtz, Barbara Holzrichter, Inge Horton, Lucia Howard, Nina Hufford, Sally Hughes, Paula Hugh-manick & Steven Berger, Marion & Jeff Hunt, Rainer Hurst, Kathleen Hutchinson,

Ira Jacknis, Donatas Januta, Jason Kaldis Architect, Madeline & Bill Jay, Barbara & David Johnson, Dan Johnson, Heidi Johnson, Janet Johnson, Raymond John-son, Kathleen Kahn, Patricia Kates, Michael Katz, Joel Kaufman & Susan Blake, Judith Kays, Diana & Robert Kehlmann, Stuart Kelman, Carland & Lee Kempf, Joseph Kewkordes, Bonnie J. Killip, Knapp Architects, Sara P. Knight, Anne & Stuart Knowles, Lisa Kolbeck, Jill Korte, Thomas Krem, Susan & Michael Kreps, Deborah & Alan Kropp, Pansy Kwong

Mary Lamprech, Robert Lane, Stephen Laner, Donald Lar-sen, Laura Latt, Kenn Lee, Marsha Lehmer, Leimkuhler-Wilk Family, Dan Lieberman & Miran Choi.

CONTRIBUTING

Nancy & Bayard Allmond, Jeffrey D. Angell, Dmitri Belser & Tom White, Ann & Patrick Buechner, Christa Burgoyne, Nancy Clark, Kim & Kazumi Cranney, Burton Peek Edwards, Ted Feldsher & Sally McLaughlin, K.D. Fisher, Dr. Sarah Gill, Blake Gilmore, John Gordon & Janis Mitchell, Trish & Tony Hawthorne, Caitlin & Michael Hibma, Faye Keogh, Ann Killebrew, Juliet Lamont, Robert Marsh, George McCord, Michael McCutcheon, Julie Nachtwey, Mary Lee Noonan, Valerie Olsen, Terry Pedersen, George Petty, Richard Rahm, Kent Rasmussen & Celia Ramsay, Elsie Revenaugh, Paul T. Roberts, Louise Adler Sampson, Joan & Ron Sipherd, Sally & Bernard Sklar, David J. Snippen, Molly Sullivan & Philip Monrad, Marion Taylor, Susan Taylor & Bob Fabry.

SUSTAINING

Margaret Anderson & James Sheehan, Eunice M. Childs, William Clemens, Carina & James Grandison, Michael Gray & Eileen Murphy, Joan K. & Donald Mastronarde, Mara Melandry, Jean & Roger Moss, Kathryn & John Par-mar, Judy & Fred Porta, Jean K. Reilly, Marjorie & Ken Sauer, David S. Winkler.

PATRON

Patricia V. Angell, David Bigham & Howard Arendson, Lorna & Warren Byrne, Bob Norton, Paul Templeton.

You can join BAHA —

Send completed form and payment to P.O. Box 1137, Berkeley, California 94701

NAME _____

ADDRESS _____

ZIP _____

TELEPHONE _____

E-MAIL _____

I want to be ACTIVE!

Special interests or talents:

\$35 Individual

Right to cast 1 vote per election. Receipt of quarterly *Newsletter*. Member discount on 2 tickets to spring House Tour. Discount on most books bought through BAHA.

\$50 Household

Right to cast 2 votes per election. Receipt of quarterly *Newsletter*. Member discount on 4 tickets to spring House Tour. Discount on most books bought through BAHA.

\$100 Contributing

Same benefits as Individual and Household categories, plus member discount on 6 tickets to spring House Tour.

\$250 Sustaining

Same benefits as Contributing, plus member discount on 8 tickets to spring House Tour.

You may now join BAHA over the Internet! Go to the BAHA Website at this address: <http://www.berkeleyheritage.com/membership.html>

\$500 Patron

Same benefits as Contributing, plus member discount on 10 tickets to spring House Tour.

\$1000 Benefactor

Same benefits as Contributing, plus member discount on all tickets to spring House Tour.

\$15 Student/Low-Income

Same benefits as Individual and Household categories.

WINTER WALKING TOURS



The Maybeck family.



Tour-goers at the main Library.



Children in Ocean View.

Weekend afternoons in February and March from 1 to 3 o'clock

We revive the old tradition of BAHA walking tours with a series of four winter walks led by expert local guides exploring lesser-known aspects of Berkeley's historical and architectural heritage. Current preservation efforts will also be discussed. Each tour: \$12 members, \$15 general. Reservations required as space is limited. Tickets may be purchased on the BAHA website: berkeleyheritage.com, or by mail at BAHA, P.O. Box 1137, Berkeley 94701. An e-mail notice of the starting points will be sent by BAHA.

• SUNDAY, FEB 18 — BERKELEY DECO AND MODERNE led by Steven Finacom

Berkeley is not commonly known as a center of Art Deco architecture, but many fine buildings designed in the cutting-edge styles of the 1930s and 40s are concentrated downtown and on the University campus. The walk will visit most of these buildings, including what was once the largest academic building in the world, Berkeley's near-forgotten downtown bus station, and Berkeley's narrowest commercial building. There may even be a look inside our finest movie palace. **SOLD OUT.**

• SUNDAY, MAR 4 — UNKNOWN SOUTH SHATTUCK led by Steven Finacom

People may speed through Berkeley's South Shattuck district regarding it only as Berkeley's "auto row," but it is actually a fascinating neighborhood that includes rare 19th-century buildings; reminders of the railroads; pleasant tree-lined residential blocks of handsome bungalows, Victorians, and Colonial Revival homes; two magnificent Moderne buildings built as Berkeley's indoor recreation hubs; and the site of Berkeley's early traveling circus grounds. We will sample the rich history of the blocks south of Dwight between Fulton and Martin Luther King, Jr. Way.

• SUNDAY, MAR 18 — THE BERRYMAN NEIGHBORHOOD led by Carrie Olson

Browse one of North Berkeley's most eclectic early residential districts west of the Gourmet Ghetto and near Martin Luther King, Jr. Junior High School, guided by a neighborhood native. Historic and architecturally interesting houses abound on quiet side streets. The walk route includes the early home of the Maybeck family, Victorians and brown-shingles, the Edible Schoolyard, two hidden creeks, and even two of Berkeley's oldest automobile service stations.

• SATURDAY, MAR 31 — BERKELEY'S SHELLMOUND HERITAGE led by Stephanie Manning

Explore the Bay Area's oldest residential neighborhood—the vicinity of the west Berkeley Shellmound—where locals were living more than four thousand years ago. Learn about the ancient "pre-contact" history of this neighborhood and the modern movement to reclaim the native heritage of this district. See buildings saved from the early neighborhood of Ocean View where Berkeley's post-Gold Rush settlement started. This is also where Berkeley's modern preservation movement was born a half century ago as residents and activists fought to preserve Ocean View from redevelopment into a warehouse district.