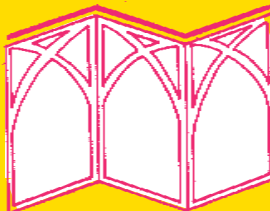
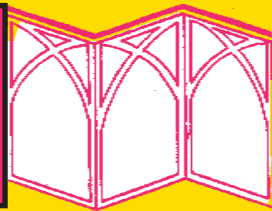


BERKELEY ARCHITECTURAL HERITAGE ASSOCIATION



# THE BAH NEWSLETTER



WINTER 2007  
NO. 124  
SPORTS NUMBER



Indian Rock

# THE BAHHA NEWSLETTER

No. 124

WINTER 2007



Strawberry Cañon

## C O N T E N T S

Wildwood Evening _____	page 2	Tilden Park Merry-Go-Round _____	page 11
President's Message _____	page 3	Berkeley Iceland _____	page 12
Berkeley High Gymnasium _____	page 4	Call for Award Nominations _____	page 13
Stadium Update _____	page 7	Gifts to BAHHA _____	page 14
Houses of Two Maybeck Cousins _____	page 8	Members News _____	page 15
Durant Hall Alert _____	page 11	Calendar of Events _____	page 16

COVER: Berkeley Iceland. Moulin Studios photo-postcard, courtesy Anthony Bruce. ABOVE: Indian Rock in North Berkeley and Strawberry Canyon viewed from the hillside above Mosswood Road (Mauser-Parsons House at 21 Mosswood Road is visible). These two pictures are part of a gift to the BAHHA Archives from Jerry Sulliger.

### BOARD OF DIRECTORS

Wendy Markel,  
*President*

Carrie Olson,  
*Vice-President*

John McBride,  
*Corporate Secretary*

Stephanie Manning,  
*Treasurer*

Laurie Bright

Susan Cerny

Susan Chase

Patrick Devaney

Jane Edginton

Richard Ehrenberger

Steve Finacom

Austene Wiley Hall

Tim Hansen

Richard Pettler

Sally Sachs

Arlene Silk

Jerry Sulliger

Janice Thomas

Daniella Thompson

Anne Wagley

### STAFF

Anthony Bruce

Lesley Emmington Jones

## Evening at WILDWOOD

THIS Newsletter would be incomplete without reference to BAHHA's magical "Evening on the Edge of the Western World" at the magnificent estate designed by Bernard Maybeck for Frank C. Havens in 1908. This event would not have been possible without the

most generous and gracious hospitality of the current owner who opened his doors to the many guests who entered into the world of high society of the past, where the interiors were designed and decorated by Louis Comfort Tiffany, with the assistance of Lockwood De Forest and his collection of exotic Asian artisans—all with an eye to hosting lavish parties during the 1915 Panama-Pacific International Exposition.

The guests were delighted to hear Gray Brechin share his insights into the life and times of California Society in the early 20th century, bringing to mind the names of important families, artists, writers, and personalities. The guests also had a special treat, hearing from Roberta Mayer, an expert on the life and work of Lockwood De Forest, who had come specifically from the East Coast for the occasion to discuss the work of Lockwood De Forest and his remarkable collaborations with Tiffany.

The current owner has meticulously restored this unique estate to its original splendor. The marvelous eclectic *mélange* of authentic Japanese, Chinese, and Indian rooms glowed again for this special occasion. BAHHA also wishes to thank all those who shared the evening, raising over \$55,000 to help defray the costs of our local preservation friends.



The BAHHA Newsletter is published quarterly by the Berkeley Architectural Heritage Association and is sent to all members of the Association. Entire contents of this issue © 2007 by the Berkeley Architectural Heritage Association, P.O. Box 1137, Berkeley, California 94701. tel: 510-841-2242; e-mail: baha@berkeleyheritage.com; website: www.berkeleyheritage.com. Produced March 2007. Contributing writers this issue: Anthony Bruce, Lesley Emmington Jones, Wendy Markel, Daniella Thompson

## PRESIDENT'S MESSAGE

Dear Members,

For three years now, BAHA has offered members and the public the OUTINGS ON FRIDAYS series of tours. Conceived as the brainchild of Board Member and past President, Sally Sachs, these wonderful tours have grown in popularity and are currently sold out. The first year saw tour-goers visiting Oakland's Cameron Stanford House, the Pardee House, and the Cohen-Bray House; Berkeley's City Club; and the University's Hearst Memorial Mining Building. The second series included Oakland's Mills College and the Preservation Park, Berkeley's Delaware Street Historic District, and the University's Edwards Field and Athletic precinct. This year's sold-out tours began with a visit to the Ninth District Court House in San Francisco, and, at this time of writing, visits have been to the Berkeley Public Library, the University's Faculty Club, and Berkeley's First Church of Christ, Scientist. The final tour will be to the Sistrina Historic District. This list of historic monuments in our midst is only the tip of the iceberg. There are many more to visit and admire.

Our current Newsletter focuses on those monuments we have in our midst that are dedicated to sports of all sorts—Berkeley Iceland, the Berkeley High School Gymnasium and Pool, the University's Memorial Stadium, and that sporting place for our very youngest: the Tilden Park Merry-Go-Round. Unfortunately, each of these community resources is under a cloud of uncertainty.

The story of the University's Memorial Stadium has been covered extensively in our previous newsletters, and to this day it remains an area of deep concern for those of us who care about what legacy is left to future generations, how we preserve the beauty of our natural surroundings and the wonderful adjacent residential neighborhoods. The immediate focus on the preservation of the "Memorial Oak Grove" has effectively raised everyone's consciousness. Over the years, the Berkeley High School Gymnasium and Pool complex has suffered from continuing neglect and now the School District seeks its demolition—all this without any substantive public input or discussion about alternatives or rehabilitation. The Pool, beloved as the Warm Water Pool, used and appreciated by many who are disabled, is threatened with imminent closure. Berkeley Iceland, too, is facing closure, but recently "a crowd of nearly 100 supporters armed with hockey sticks and ice skates rallied at the Berkeley City Council" (from the *Daily Californian*) to spur city officials to support a community effort to prevent the closure. And, finally, tiny tots have had their carousel closed by the Division of Occupational Safety & Health—after ninety years of happy operation (58 years in Tilden Park), six years of continual inspections and a major restoration using tax payers' dollars! The unnecessary destruction by regulation of the State's historic merry-go-rounds is a tragedy. In all the talk of "green" buildings, one wonders what can be more "green" than preservation, retention, and maintenance of buildings and natural settings that already exist.



It is not possible in one Newsletter to bring to you all the historic resource causes in which BAHA is engaged, but I would urge you to stay involved and, wherever possible, act now to save our historic treasures, be they for the ever-so-young or be they-ever-so-"monumental."

*Among the rocks in Thousand Oaks:  
BAHA's Spring Tour will be May 6th.  
Wendy Markel, 2007.*

Wendy Markel

# BERKELEY HIGH SCHOOL GYMNASIUM AND POOL

## An Architectural and Sports Legacy



*The Berkeley High School Gymnasium (William C. Hays, 1922) as it appeared after major additions designed by Walter H. Ratcliff, Jr., in 1929. To the left is the long Milvia Street frontage that is still a handsome presence. December 1932 Olla Podrida.*

A short while ago a group of concerned citizens, Friends Protecting Berkeley's Resources, organized to defend the Berkeley High School Gymnasium and Pool. The "Old Gym," which includes the beloved "Warm Water Pool," is an irreplaceable community resource, now in jeopardy, due to a hasty decision made on January 17, 2007, by the Berkeley Unified School District (BUSD) to demolish the entire building.

The Gym, along with the Academic Building, was initially designed by William C. Hays and has been on the Landmark Preservation Commission's list of "Potential Initiations" for the past eight years, but, like Berkeley Iceland, there has been no one until now who had the time to undertake the necessary research. The Commission is scheduled to consider its landmark designation at its April meeting.

Carey & Co., a San Francisco architectural firm noted for its historic preservation work, recently completed an "Historic Resource Evaluation" for the BUSD's Draft Environmental Impact Report. The Carey & Co. report concludes that the Gym is eligible for designation as a City of Berkeley Landmark and for listing in the National Register of Historic Places.

Linked to the Downtown and the Civic Center, the Gym building is reflective of Berkeley's educational aspirations during the era of the City Beautiful

Movement—a time when Berkeley's noted architects participated in the development of the Berkeley Public Schools. From its beginnings, Berkeley High School, California's first accredited high school, was in constant flux as it responded to a growing student body, an expanding campus, and its higher educational needs. By 1922, however, technological advances in construction made it possible to build such "modern" school facilities as auditoriums, gymnasiums and pools.

William C. Hays came to Berkeley from Philadelphia at the request of John Galen Howard to participate in Howard's grand *Beaux Arts* campus plan for the University. Hays himself had worked on other campus plans, including the plan for the University of Pennsylvania. When Hays took on the design of the Gym, he had been appointed School Supervising Architect and had already designed the handsome Academic Building (now known as "Building C"), Jefferson School (City of Berkeley Landmark, #117), and Thousand Oaks School (City of Berkeley Landmark #182, demolished).

The Gym first consisted of a central two-story gymnasium enclosed by a two-story classroom section on the east and a swimming pool on the west. Then, in 1929, Walter H. Ratcliff, Jr., who was also strategic in planning Berkeley's fine public schools, designed an addition on the south, where the Warm Water Pool is



*The Berkeley High School Gymnasium as it appeared after the 1937 seismic work by Thomas Chace—and as it looks today. BAHA Archives.*

located, and an identical addition on the north. In 1936, a major seismic reconstruction was undertaken by the structural engineer Thomas F. Chace, who had previously worked on the 1915 Panama-Pacific International Exposition, Kezar Stadium, and Memorial Stadium. He employed the most modern seismic retrofit techniques of the day, and added Period Revival touches to the building which had been necessarily shorn of its glazed terra cotta ornament.

The Carey & Co. report finds the Gym to be historically significant as it:

...is representative of early advances in seismic structural engineering...[and] the gym is representative of the early twentieth century ideal of a modern high school, that is, one having an athletic complex of a gymnasium, swimming pool, athletic fields, locker rooms and exercise tracks. Furthermore, it is one of the of the oldest surviving buildings on the Berkeley High campus and it contributes to the historical context and setting of the campus. The Gym's architectural characteristics, such as its size, scale, materials and design, are compatible with the High School's setting.

Learning from the Carey & Co. report, BAHA commented on the DEIR and the proposed plans to demolished the Gym. Members of BAHA also attended the January 17th meeting of the School Board and

saw with amazement that there was a lack of serious discussion about alternatives. The examination of a possible Historic Rehabilitation Alternative as being "environmentally superior" to demolition, a mandate for compliance with the California Environmental Quality Act (CEQA), was completely inadequate.

In total, the "Old Gym" encompasses two swimming pools, two gymnasiums, dance rooms, classrooms, meeting rooms, and endless locker space. Certainly it would seem very "un-green" to throw the Berkeley High School Gymnasium and Pool into the dump. And, it would seem contrary to the spirit of Measure G, just passed by Berkeley's voters to direct the City to reduce its energy use and waste (a stated objective of Mayor Bates). It would also seem to be in ignorance of Proposition 1D, the State Legislative Bond Act passed by all of California's voters to "...repair older schools...improve earthquake safety and fund vocational educational facilities in public schools."

It's true, as both old-time graduates and recent graduates can testify, that the Gym has been in a state of neglect for years, due to lack of maintenance. Every user of the Warm Water Pool, likewise, knows that the pool desperately needs repair. In fact, in 2000 the citizens of Berkeley passed a Bond measure specifically to provide over \$3 million to renovate the Pool. Regardless of this mandate, the facilities continue to be neglected. Every



*West elevation of the Berkeley High School Gymnasium, showing the Girls' Pool in the foreground. This is one of today's "Warm Water Pools." 1933 photo, BAHA Archives.*

day, the public can view the lack of care for the complex when viewing the handsome façade along Milvia Street with its "open air" windows (which seem to be left open even when school is not in session, exposing the interior to the elements).

Friends Protecting Berkeley's Resources, filed a CEQA suit on February 23, 2007, in the public interest to enforce environmental laws protecting the historic 1922 Gym complex. Toward the expenses of the legal challenge BAHA has contributed \$1,000. Filed by Susan Brandt-Hawley, known throughout the State for her tireless and successful preservation advocacy, the suit states, in part: "The District can feasibly rehabilitate its historic and cultural resources for educational, administrative, and community purposes. Demolishing the gym and



*GAA Life Saving Club at poolside. Fall 1937 Olla Podrida.*

pool is wasteful and shortsighted. The Friends look to the Courts to enforce state law protecting the integrity and legacy of Berkeley High School's historic gymnasium and Warm Water Pool for rehabilitation and re-use."



*Memorial Stadium viewed from the air in the 1930s. BAHA Archives, gift of Marianne Hurley.*

## THE FOOTBALL STADIUM

### An Important Update



*The Memorial Football Stadium seen from Mosswood Road on Panoramic Hill, c. 1924. BAHA Archives.*

**S**INCE California Memorial Stadium was built on the site of Strawberry Canyon's waterfall after the Great War, nearly 100 years of Cal's home football games have been played in its arena. Savored recollections of these games have always included memories of that special place, its grand architecture, gracious residential surroundings, and dramatic vistas. Yet, over the years, patterns of development, especially after World War II, have diminished the quality of this unforgettable site.

The University's proposed Southeast Campus Integrated Project (SCIP) has alerted Berkeley's citizens to the fact that the Stadium and its environs are continually threatened by demolition, natural disasters, building density, and urban blight (see *BAHA Newsletter*, Summer 2005 and Fall-Winter 2006). In the SCIP plan, the Stadium itself would not merely be retrofitted to accommodate the once traditional four home games, nor, even, to accommodate the demands of "up to eight games per season" of a NCAA team, but it would be reconstructed to become an arena for seven additional nighttime and/or daytime "capacity" events a year.

Added to the proposed plan to reconstruct the Stadium—which will be, in reality, a new "Sports-

Entertainment Industry" facility, is a new student training center for thirteen sports; then added, is a new 900-vehicle garage; and then added, a new office, teaching, and auditorium/amphitheater building; and then, a University business executive training center (in a converted Bowles Hall dormitory with two new wings!). On top of all this, add the proposed new plan for Lawrence Berkeley National Laboratory (LBNL) in Strawberry Canyon, which allows for almost a million square feet of new buildings, up to 500 new parking spaces, and 1,000 new employees—all this added to an already over-built Berkeley hillside.

When such a change is pending, it is critical to be able to defend and preserve those historic and cultural landmarks that define the community's heritage. Indeed, the growing public concern about the "Stadium issue" has inspired action and partnerships, such as: 1) Panoramic Hill is our first National Register Historic District; 2) the Stadium is also listed on the National Register; 3) the Bowles Hall (listed on the National Register) Alumni Association is providing strong leadership and vision; 4) four California Environmental Quality Act (CEQA) lawsuits are pending in Alameda County Superior Court; and 5) tree-sitters have been protecting the Memorial Oak Grove day and night, including some of BAHA's esteemed members. Furthermore, at its last meeting the Landmarks Preservation Commission recommended that Strawberry Canyon be nominated as a significant "cultural landscape."

While there is no crystal ball about the success of these community efforts, it can be said that the public is mobilized with the hope that alternatives will adequately be discussed in time.



*"Sylvia and the Oaks." Courtesy Sylvia McLaughlin.*

# ARCHITECT BERNARD MAYBECK'S HOUSE ON GROVE STREET AND HIS COUSIN JOHN MAYBECK'S HOUSE ACROSS THE STREET

BY

DANIELLA THOMPSON

*At its February 1, 2007 meeting, the Landmarks Preservation Commission designated the Maybeck House No. 1 (Bernard Maybeck, 1892–1902), 1300 Martin Luther King, Jr., Way, as City of Berkeley Landmark No. 297 based on an application by Gerhard Blendstrup and Ezra Hendon. Surprisingly, the vote to landmark this first house designed by one of America's legendary architects was not unanimous. Over the years, the house has suffered from alterations, and this apparently affected the vote. However, the original structure is still recognizable and restorable. Long intrigued by a John Maybeck who lived a block away on the same street, we tracked down his grandson, William Maybeck, and learned that John was Bernard Maybeck's first cousin. The story of the houses of the two Maybeck cousins follows.*



*The Maybeck House—the garden façade, as pictured in The Simple Home (1904) by Charles Keeler.*

**I**n 1889, Bernard Maybeck moved from New York to Kansas City with the object of establishing an independent practice there. Work was scarce, but the sojourn was fruitful: the architect met Annie White, whom he would marry the following year, and the young architect Willis Jefferson Polk, whom he may have known in New York. Polk soon moved to California and lured Maybeck out as well.

While waiting for an opening in the San Francisco office of the fashionable young architect A. Page Brown, Maybeck had a temporary job at the established firm of Wright and Sanders, architects of the Mark Hopkins mansion on Nob Hill. Next he became principal designer at the Charles M. Plum Company, interior designers and custom furniture makers.

*Annie and Bernard Maybeck with their son Wallen on the steps of 1300 Grove Street. Courtesy Maybeck Family.*



While designing lavish interiors for Nob Hill mansions, Maybeck lived with Annie in a cottage in the Piedmont hills. Here he had “an experience that profoundly affected his whole artistic outlook,” wrote Charles Keeler in his memoirs. “[N]ext door to him the Reverend Joseph Worcester had a little summer retreat. Looking into Mr. Worcester’s windows, he saw the interior of the cottage was all of unpainted redwood boards. It was a revelation.”

In 1891, A. Page Brown’s work volume increased, and Maybeck joined his staff. A year later, the Maybecks purchased a double lot in northwest Berkeley, on the corner of West and Gilman. The streets were renamed several times since then. West became Sherman, then Grove, and is now known as Martin Luther King, Jr., Way. The old Gilman is now Berryman Street.



*John Maybeck House, 1423 Grove Street, built about 1900. Courtesy of William Maybeck.*

The area was isolated; for over ten years, the Maybeck property was the only inhabited one on its block. Although several published accounts mention an existing one-story cottage on the property, new evidence from tax records and newspaper reports would indicate that the Maybecks bought an empty lot and built their house from scratch. Either way, Maybeck soon began to transform the cottage. Lacking the means to hire a contractor, the architect initially did much of the work himself. Over several years, the house doubled its footprint and gained a second story, a low-pitched saddle roof with wide overhangs, a projecting sleeping porch, and a great variety of windows. Two styles of wood shingles adorned the exterior.

Keeler, who had first met Maybeck in 1891, described the house as it was in 1895:

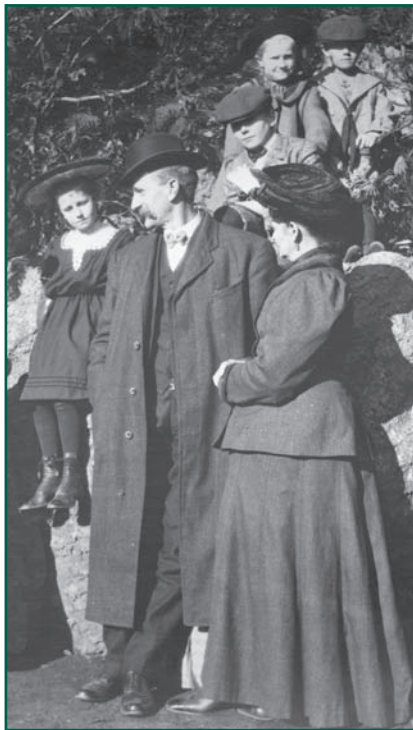
I sought out Mr. Maybeck at his home in northwest Berkeley and told him I had come to accept his offer to design our house. I really had no idea what I was getting into when I put myself in his hands. I found his own home was not yet

complete and that he was working on it at odd times, with the assistance of Julia Morgan's brothers. His house was something like a Swiss chalet. The timbers showed on the inside and the walls were of knotted yellow pine planks. There was no finish to the interior, for the carpenter work finished it. There was a sheet iron, hand-built stove, open in front and with brass andirons. Most of the furniture was designed and made by Mr. Maybeck himself. It was a distinctly hand-made home.

In 1894, Maybeck was appointed instructor in drawing at the Civil Engineering College of the University of California. A school of architecture did not yet exist, so Maybeck offered interested engineering students an independent course in architectural design, given in his house. The students included an impressive array of future luminaries: Wiley Corbett (architect of New York's Rockefeller Center); Edward H. Bennett (co-author of the Chicago city plan with Daniel H. Burnham); Julia Morgan; Lewis Hobart (architect of San Francisco's

Grace Cathedral and Bohemian Club); John Bakewell and Arthur Brown, Jr. (who would collaborate on the city halls of San Francisco and Berkeley); G. Albert Lansburgh (designer of many theatres, including the Warfield and Golden Gate in San Francisco, the Shrine Auditorium in Los Angeles and, with Arthur Brown, San Francisco's War Memorial Opera House); and Loring P. Rixford (architect of the Sacramento City Library). Bakewell described the course as combining design theory and a period of practical application, during which the students worked on the additions to the house.

Maybeck would apply the principles tried out in this domestic laboratory to his early private commissions. Keeler was his first client, and the architect not only designed his home but provided lessons in architectural philosophy:



*John and Dora Maybeck with their children, Catherine, John, Margaret, and Clifford. Courtesy of William Maybeck.*



Above: the south-facing gable (since obliterated), c. 1902. Bernard Maybeck Collection (1956-1), Environmental Design Archives, University of California, Berkeley. Right: view from the garden, c. 1902, private collection.



Sherie and William Maybeck on a recent visit to the BAHA office. Anthony Bruce.

A wooden house should bring out all the character and virtue of wood—straight lines, wooden joinery, exposed rafters, and the wooden surface visible and left in its natural state. A house should fit into the landscape as if it were a part of it, it should also be an expression of the life and spirit which is to be lived within it. [...] whatever was of structural importance should be emphasized as a feature of ornament. [...] He was interested in the simple life which is naturally expressive and consequently beautiful. He believed in handmade things and that all ornament should be designed to fit the place and the need. He did not mind how crude it was, provided it was sincere and expressed something personal.

The Keeler house, built in 1895 on the corner of Highland Place and Ridge Road, was soon joined by three additional seminal Maybecks: Laura G. Hall house (1896), Williston W. Davis house (1897), and William P. Rieger house (1899). They transformed the Northside and served as models for the “Simple Home” gospel promulgated by the Hillside Club.

Around 1900, Bernard’s first cousin, John E. Maybeck (1862–1944), built a home at 1423 Grove Street, a block to the south of Ben and Annie. In the family tradition, John was a woodcarver. His grandson, William Maybeck, relates that Bernard, dissatisfied with the quality of workmanship in San Francisco, persuaded his cousin to come out from New York. In 1890, John married Petaluma girl Dora Gaston in a civil ceremony, and Bernard acted as witness. John went into business as a mantel dealer but eventually became a teacher at the Wilmerding School of Industrial Arts in San Francisco, a position he held for many years.

John and Dora raised four children: Catherine, John W., Margaret, and Clifford. Eventually they moved to

2414 Dwight Way but kept the Grove Street house. After the parents died, Margaret was given the Grove Street house, which she sold in 1956. In 1962 it was replaced with an apartment building.

Of John and Dora’s children, only Clifford married—his bride was William Wurster’s sister Helen. Clifford and John ran an asparagus farm near Stockton. John lived on the farm, while Clifford, Helen, and their three children lived in town. Holidays were spent in Berkeley. The family stayed with the Wursters on Greenwood Terrace and always visited uncle Ben and Annie on Buena Vista Way. The main Maybeck branch remained in New York and is now concentrated on Long Island. Poquott, NY, situated between Setauket and Port Washington harbors, even boasts a Maybeck Drive.

Bernard and Annie Maybeck continued to live in their Grove Street house until 1906, when they sold it to German professor Ludwig J. Demeter and his wife Rowena. While their new home was being built on the corner of La Loma Avenue and Buena Vista Way, they lived with Annie’s brother, architect John White, at 1615 Arch Street.

But this wasn’t the end of the Grove Street house’s connection with architecture. By the late 1950s and early ’60s, it had assumed legendary status among the University’s architecture students. According to architect Richard Ehrenberger, its student residents included future folksinger Kate Wolf and her eventual husband, architect Saul Wolf; Howard Ray Lawrence, future professor of architecture at Penn State; and future architect/photographer Jeremiah O. Bragstad.

## Alterations Planned for DURANT HALL on Campus

READERS of the Berkeley Daily *Planet* may have missed a short article in the December 8, 2006 issue, “UC Berkeley Readies for Durant Hall Renovation,” which, sadly, announces the remodeling of a pristine campus gem. The Department of East Asian Languages will leave Durant Hall this year and then a reported \$7.5 million renovation will divide the interior into “administrative rather than classroom-sized subdivisions” for use by University administration.

Howard’s first building to be completed under the Hearst Plan, California Hall (1905), was gutted in about 1970, removing all original finishes and its atrium and auditorium. Durant Hall, designed by Howard in 1908 as Boalt Hall of Law, is the companion building to California Hall, and contains a jewel of a library on the second floor, complete with original light fixtures designed for



Durant Hall, formerly the Boalt Hall of Law, on the University campus. Pacific Novelty postcard no. 1818, c. 1912, courtesy of Anthony Bruce.

the space, and original classrooms, and, even, original marble bathrooms. One would hope that the remodeling of Durant Hall’s interior will not be as heavy-handed as that of California Hall. This would be a good time to pay a visit to this beautiful little building

## Tilden Park MERRY-GO-ROUND in the News

BY now you must be reeling from the scare stories in the papers and on the Internet announcing that the Tilden Park Merry-Go-Round would cease operation. Well, the problem was not so big as was first believed. Although the Tilden Merry-Go-Round has performed for ninety years with no mishaps, the State of California, in a concern for public safety, “red-tagged” the carousel earlier this year. A fence—or lack thereof—was mentioned in news articles. This proposed fence would, in fact, be a low, glass, protective barrier between the old-time, whirling carousel and those waiting their turn to ride. Although not traditional in merry-go-round design, it would be a fairly unobtrusive addition.

However, changes that may disfigure our historic resources—including antique carousels—are a concern. An e-mail received from Dan Horenberger, publisher of *Carousel News & Trade*, claimed that several antique carousels in California had already closed in response to the recent State mandate that all such carousels must now adhere to modern standards.

The Tilden Park Merry-Go-Round is a Hirschell-Spillman carousel, created in 1911. A so-called “menagerie” carousel, its stable of animals includes such creatures as frogs, cats, rabbits, a stork, a dragon, and a giraffe, as well as the regulation horses. It was installed



One of two frogs on the Tilden Park Merry-Go-Round. Anthony Bruce, 1985.

under its polygonal domed roof in a unique sylvan setting, atop a knoll near Lake Anza, in Tilden Park in May, 1948, where it has given pleasure to generations.

In November, American Express and the National Trust for Historic Preservation announced that thirteen Bay Area historic sites had been selected as Partners in Preservation grant recipients, including the Tilden Park Merry-Go-Round. Many BAHA members voted on the special Web site during October. Berkeley’s First Church of Christ, Scientist was the top vote-getter.

# BERKELEY ICELAND



1996  
photo by  
Raymond  
Hickey, Jr.

*The large committee of citizens [which included Robert Gordon Sproul, Duncan McDuffie, and Aurelia Henry Reinhardt] is sponsoring East Bay Iceland because it believes this project will contribute more adequately to the pleasure, physical well-being, and entertainment of residents of the Bay Area. East Bay Iceland, A Community Enterprise, [1938]\**

**Y**OU have most certainly read in the local newspapers that, after several years of uncertainty, Berkeley Iceland will be closed this month. Iceland has been a local institution for 67 years, ever since it opened in November 1940 with an ice show sponsored by the Oakland Junior League. The mammoth concrete Streamline Moderne structure—so representative of the 1930s—was designed by Berkeley architect William Clement Ambrose in 1939, along with the builder W. A. Bechtel, the precursor to today’s Bechtel Construction Company. Although close to Shattuck Avenue, Iceland is not an everyday presence, as it fronts onto a quiet block of Milvia Street and the sides of the building are partially hidden by its distinctive high earth berms. These berms are an early, innovative form of “green” construction, as they help keep the building cool.

Iceland includes, under a high ceiling supported by steel girders, one of the few Olympic-size rinks that has been in daily use in the United States. Wooden bleachers, an old-fashioned wintertime mural, a stage area, a former coffee shop protected from the cold air by a glass partition, and an elegant Art Deco lobby with marble fireplace are other notable features. A series of stylized windows perforate the cathedral-like ceiling, throwing a natural light down upon the rink, while also enhancing the façade’s distinct Moderne design.

SaveBerkeleyIceland.org, a recently formed community organization, has begun exploring ways to preserve this unique facility. Ten years ago, Raymond Hickey, who had had a long association with Iceland, but suffered from ill health, donated many resource materials to BAHA hoping that a Landmark Application would be written. Soon after, BAHA received additional materials from John Ballantine (son of the architect) whose mother was a prominent member of the St. Moritz Ice Skating Club. This last Fall Tom Killilea, of Save Berkeley Iceland, made use of the BAHA Archives when he prepared and submitted a City of Berkeley Landmark Application.

The statement of significance from the Landmark Application reads in part:

[Iceland] is one of the largest rinks in the western U.S. Berkeley Iceland is also representative of the period, with prominent Art-Deco features, and sleek lines. It is an impressive engineering feat with its huge expanse of ice and vaulted steel structure representing design and construction techniques in ice arenas that is found in few other places and no longer found in modern times.

Berkeley Iceland is intertwined with the history of skating on the West Coast. From being the training

ground of nationally and internationally known athletes such as Maribel Vinson, national champions Gene Turner and Peggy Fleming, and Olympic gold medalist Brian Boitano, to hosting the first National Skating Championships in the West. Berkeley Iceland has contributed to the interest in figure skating. It is home to two of the oldest figure skating clubs on the West Coast: St. Moritz ISC and the University Figure Skating Club. It has been the training ice for professional hockey and competitive home for UC and scores of local hockey clubs. Few sites in skating can boast this history.

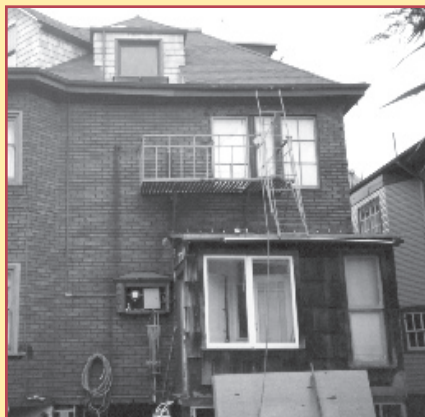
It can be assumed that the Landmarks Preservation Commission will designate Berkeley Iceland as a City of Berkeley Landmark at their April meeting. As one Commissioner has stated, "Iceland has better integrity than just about anything else the LPC has had before it in years." And, as another Commissioner stated, "The Art Deco building obviously appears to be eligible for the National Register of Historic Places."

## Make a DATE To Come SKATE AT *Iceland*



It would probably be safe to say that most of BAHA's members have taken pleasure at Berkeley Iceland, finding both the physical well-being and entertainment envisioned by those who worked so hard during the Depressions years to establish it as a lasting community enterprise. Here's to the preservationists today who are working equally hard to keep it viable for future generations!

\*The large committee of citizens included such notables as Robert Gordon Sproul, Duncan McDuffie, Aurelia Henry Reinhardt, C. C. Young, and K. K. Bechtel.



A  
BEFORE  
and  
AFTER  
from a  
previous  
year



### CALL FOR PRESERVATION AWARDS NOMINATIONS

**B**AHA invites the nomination of outstanding projects that have renewed the life of historic properties and neighborhoods in the city of Berkeley. Entries will be judged according to such criteria as aesthetic quality, historical significance, and contribution to the fabric of the city.

Each nomination should include the project's address, the dates of the preservation work, the names and telephone numbers of the nominator, owner, architect or landscape architect, contractor, and engineer, as well as historical information regarding the site and a description of the project

that explains the reason for its nomination. All projects must be located within Berkeley and have been completed between April 2006 and March 2007. Please include photographs, ideally showing "before and after."

Please submit nominations by April 1, 2007. Documents should be sent to BAHA, P.O. Box 1137, Berkeley, California 94701, or, by e-mail, to [baha@berkeleyheritage.com](mailto:baha@berkeleyheritage.com), or brought to the office at 2318 Durant Avenue. Winners will be awarded certificates at the BAHA Annual Meeting, to be held on the evening of May 31.

## GIFTS TO BAHA

**Barbara Maybeck Wielandt**, daughter of Harold Bernard Maybeck, sent an early photo of her father on his onetime visit to Berkeley. He wrote when he became a member of BAHA, "I visited Uncle John and Aunt Margaret and family on Dwight Way and also Uncle Bernard at his house, each for one week."

**Jerry Sulliger** gave for the Archives a birds-eye photo of Claremont Court in about 1925, several pictures of Panoramic Hill, Claremont Hotel grounds, and the main post Office under construction; a copy of the 1927 Armstrong College yearbook *Aldus*; and the May 1955 *Progressive Architecture*, which includes an article on Vernon DeMars' Berkeley home.

**Ratcliff**, the architectural firm gave BAHA copies on disk of all the original drawings for Hillside School (Walter H. Ratcliff, Jr., 1925).

In December, there came a monetary donation from **Leslie M. Freudenheim**.

**Paul Templeton** presented us with two beautiful framed pictures, each a composite, one of old and one of new photographs of Temple of the Wings.

**Beth Wilson**, through the kindness of **Heidi Long** at Red Oak Realty, gave copies of photos of two brown-shingle houses that stood at Berryman and Shattuck, and two early photos of Live Oak Park.

**John Poyser** gave a framed pen-and-ink sketch of Maybeck's Rees House (1905) at 1705 La Loma Avenue and lent, for scanning, photos of the house and his family in the 1930s and '40s.

In response to the invitation to "An Evening on the Edge of the Western World," these people donated money to go toward the preservation work of the Panoramic Hill and Piedmont Way area (the area that will be most affected by current University construction projects): **Robin and Tim Hassler, Louise Simpson Hendry, Lynn and Jeffrey Horowitz, Andrew Masri, Francine and Charles Mohn, Jeffrey M. Seideman and Elisabeth Meyer Wechsler, and Frances and Randolph Starn.**



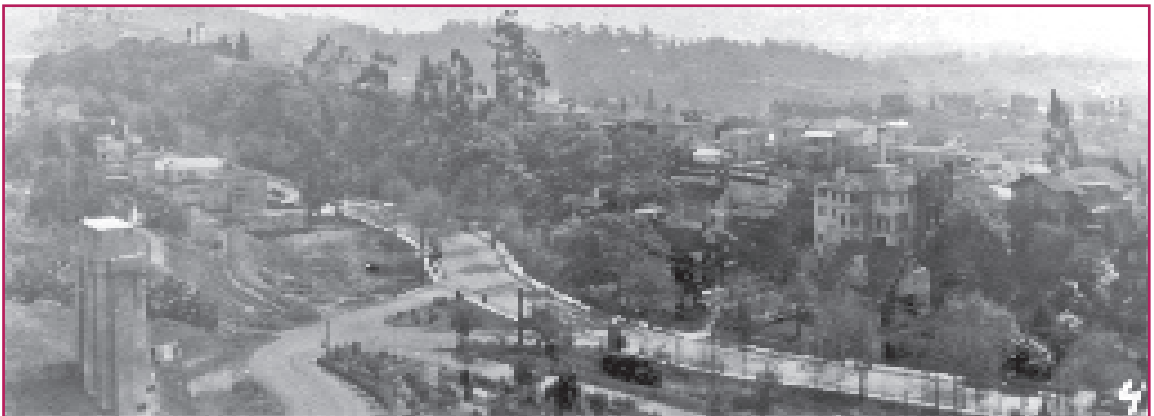
Written on the back: "Harold B. Maybeck, aged 18, visiting Uncle Ben Maybeck (architect) in California. 1920."



The Rees House in 1906 and the Poyser family on the front terrace in 1949.



A cottage on Berryman Street. Courtesy Beth Wilson.



View of Tunnel Road and Oak Ridge Road from the tower of the Claremont Hotel. Note one of the hotel's many chimneys at left. BAHA Archives.

**WELCOME NEW MEMBERS . . .**

*BAHA welcomes the following people who have joined BAHA since the last Newsletter went out. Tell your friends about BAHA and encourage them to join, too!*

Linda Alberti	CONTRIBUTING
Jesse Arreguin	Lynn & Jeff Horowitz
Jean Brown & Ron Brown	Susan Landauer
Marianne Cleary	Dianne Sequoia
Alicia Ivancovich & Gregory Keller	John Shepard & Katharine Gale
Laura Croul Latt	Sustaining
Rianne Lovett	Anne Campbell & Steven Tong
Jesse Manning	Gustave Carlson
Jennifer McDougall	Design Assoc. AIA
Gretchen Muller	Patron
Krystyna Nitschke	Carina & James Grandison
Louise Orion	
T. Rachel Slonicki	
Susan Stone	

**IN MEMORIAM**

—Marjorie Dakin Arkelian—  
 —Jessie L. Chico—  
 —Miriam Cutter Dinkelspiel—  
 —Sally Hawkins—  
 —Leon Henkin—  
 —Nelson Polsby—  
 —Martin Trow—



**...and Members Renewed**

**Fan Albritton**, Gertrude & Robert Allen, Nancy & By Allmond, David Allswang, Keith Alward, Judy & Gary Amado, Annalee Allen, Betty Ames, Laura L. Anderson, Sheila Andres, John Aronovici;  
**Leslie Easterday**, Patricia & Michael Edwards, Barbara Ehrenberger, Dan Eisenstein, Joan Embree, John English, S. Entwistle, Virginia Erck,  
**Romney O'Connell**, Ginger Ogle, Gaby Olander, Mr. & Mrs. Robert Oliver, Valerie Olsen, Jana K. Olson, Karen Olson, George Oram;  
**Gregory Page**, Nancy Page, Nancy B. Pakter, Andrew Partos, Stuart Pawsey, Catherine Pelizzari, Periodical Division/University Library, Richard Pettler, George O. Petty, Therese Pipe, Wendy Polivka & Evan Painter, Jane Powell, Madhu Prasher & Joseph Ferrie, Ruth Preucel, Roger Pritchard, Alyce Proctor, Sammie Prosser,  
**Kit Ratcliff**, Jean K. Reilly, Rena Rickles, Richard Riffer, Anthony Rinella, Lynn Roberts, Vickie Robinson, Wendy Rogers, Nicholas Rosenlicht, Rosie Rosenthal, Sam Rosenthal, Diana Diamond Ross, Jon Rossen, Gail Rubman, Charles Ruppert, Dr. Y.H. & Ruth Rutenberg  
**Sandra & Jerome Sackman**, Nan Sandusky, Marjorie & Kenneth Sauer, Jack Sawyer, Jim Schee, Judith Schelly, Danny Scher, Susie Schevill & Robert Sinai, Eloise Schmidt, Peter Schorer, Anne-Catrin Schultz, K. Schwartz, Richard Schwartz, Michael Scott, Steve Sekiguchi, Heidi Seney, Shari Ser, Brenda Shank, Warren Sharp & Louise Laufersweiler, Patrick Sheaffer, J. Sheehan & M.L. Anderson, Sandra Sher, Lindsey Shere, Robert Shimshak, Elizabeth Shugart, Candy & Tom Simonen, Ann Singer, Kirin Singh, Joan & Ron Sipherd, Barbara & Sam Skelly, Ann Slaby, Paul Slater, Sherrick A. Slattery, Betsy Smith, Brad Smith, Dan Smith, Debbie Smith, Gibbs Smith, Grace Smith, Grace & Carl Smith, Harvey L. Smith, Roger Smith & Gene Erickson, David Snippet, Franz Snyder, Jane Sokolow, David Somers, Winsor Soule, Patricia Spear, Sherril Spellman, Paul Spencer, Marjorie Sperber, Carrie Sprague, John W. Stansfield, Christine Stark, Kristine Steensma, Andrew Stewart & Darlis Wood, Carol Stone, Judy

Stonefield, Ladonna Stoppel, James B. Storey, Joan & Carl Strand, Mr. & Mrs. George Strauss, Allen Stross, Joann & Jon Sullivan, Linda & Charley Swift, Joan Symonds, Kathleen Szawiola  
**Frances Tauber**, Christine Taylor & LeRoy Wilsted, Edie Darknell Taylor, Joan E. Taylor, Marion Taylor, David Teece, Paul M. Teicholz, Marie Teixeira, Joyce Tenby, Janice Thomas, Marci Thomas, Conness Thompson & Dave Norman, Kirk Thompson & Sarah Shields, William Thur, Megan Thurmond-Smith, Garth Tissol, Lisa Titus, Marc Toma, Ama Torrance, Rebecca & Robert Tracy, Elsa & Revan Tranter, Helen Tryon  
**Brian Ullensvang & Mary Brennan**, Clem & John Underhill  
**Marlys Walburger**, Jason Wallace, Judy Wessing, Patty & Howard Whisler, Barb & William Wilkie, Sally & George Williams, Thomas T. Williamson, Mark Wilson, Nina & Paul Winans, David S. Winkler, Richard E. Winnie, Harold A. Wright, Helen Wynne  
**Carol Yokoi**  
**Bill Zerkle**, Jeanette Zerneke, Edith Zinn, Alex Zwerdling

**CONTRIBUTING**

Sallie Arens, Lorna & Warren Byrne, Jennifer & Richard Emerson, Bruce A. Fodiman, Linda & John Gage, Lessel Hans-Mansour, Steve Hyland, Ann & Dobie Jenkins, Jason Kaldis Architect, Sharon Karol, Vivian & Alfred Lopez, Joan & Donald Mastronarde, Steve McCanne & Tami White, Mrs. John T. Noonan, Jr., James Novosel/The Bay Architects, Judy & Fred Porta, Laurie Sarachan, Robert A. Smith, Paul Templeton, Sylvia W. Tower, Ann K.U. Tussing, Judith & Richard Wesell, Wooden Window, Inc.  
 Sustaining  
 Abrams/Millikan, David Bigham & Howard Arendtson, K. Sutton, Anne Wagley & Gregory Pedemonte, Evie & Gordon Wozniak  
 Patron  
 Creekcats Environmental Fund: Juliet Lamont & Phil Price



*Tilden Park merry-go-round, from an old postcard.*

## CALENDAR OF EVENTS

### APR 6 — BAHA FRIDAY OUTING

“Sisterna Historic District.” *SOLD OUT*

### APR 7 — BHS WALKING TOUR

“UC Stadium, the Sports Hall of Fame and Live Oak Trees” led by Bruce Goodell. 10:00 to Noon. Members \$8, nonmembers \$10. For information: (510) 848-0181 or [www.cityofberkeley.info/histsoc/](http://www.cityofberkeley.info/histsoc/). This is one of a series of tours, running through June 9.

### APR 9 — BPL/BCC LECTURE

First talk in the series, “Strange Bedfellows: Art and Public Policy in Berkeley-Past, Present, and ...Is There a Future?” at the Berkeley Public Library, 2090 Kittredge St., 7pm, free. Through May 21. Includes historian Chuck Wollenberg, authors Gray Brechin, Kimi Kodani Hill; artists David Goines, Eduardo Pineda, Robbin Henderson; publisher Malcolm Margolin; and University Art Museum’s Peter Selz, and Kevin Consey. Call (510) 981-6150, 981-6100, or visit: [www.berkeleypubliclibrary.org](http://www.berkeleypubliclibrary.org).

### APR 12 — OHA LECTURE

“Building with Nature: Inspiration for the Arts and Crafts Home” by Leslie Freudenheim. Part of the “Second Thursday” Lecture Series, Chapel of the Chimes, 4499 Piedmont Ave. \$8/\$10. For information and schedule of future lectures, call (510) 763-9218 or visit: [www.oaklandheritage.org](http://www.oaklandheritage.org)



### MAY 3 — BAHA LECTURE

“Berkeley Rocks” by Jonathan Chester. Followed by a book-signing. Location and time to be announced.

### MAY 3-6 — PRESERVATION CONFERENCE

32nd Annual California Preservation Conference, “Preservation Goes Hollywood” in Hollywood. For information, visit: [www.californiapreservation.org](http://www.californiapreservation.org).

### MAY 6 — BAHA HOUSE TOUR

“Among the Rocks” Watch the mail for an announcement end of March. Tour of gardens and homes in a North Berkeley natural rock landscape. 1-5pm; \$25/\$35. Call (510) 841-2242 to volunteer.

### MAY 31 — BAHA ANNUAL MEETING

Includes presentation of annual Preservation Awards. Time and place to be announced.

### JUL 26 — B.A.R. LECTURE

“Arts & Crafts Houses in the East Bay: Why They’re More Art than Craft” by Dave Weinstein. Hillside Club, 7:30. \$15/\$20. Part of the Berkeley History & Architecture Lecture Series (benefit for B.A.R. Youth Arts & Education Fund). Sept. 27: Jane Powell on “Bungalows: The Ultimate Arts & Crafts Home.” Visit: [www.berkeleyaor.com/lecture/](http://www.berkeleyaor.com/lecture/).



*Berkeley High School Gymnasium display in the Community Theatre; part of a Berkeley High School history exhibit curated by Betty Marvin and Anthony Bruce. Betty Marvin, 1983.*