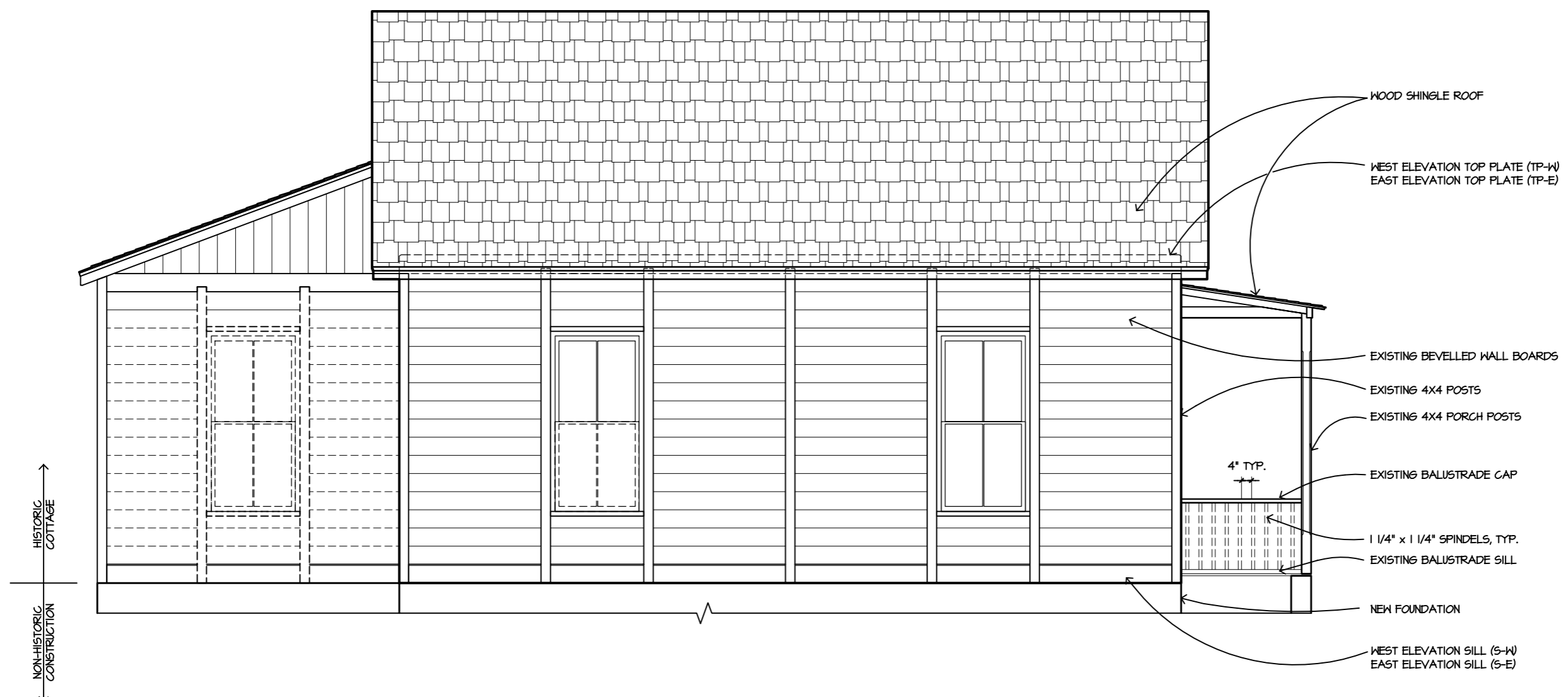




ARCHITECTURAL RESOURCES GROUP
Architects, Planners & Conservators, Inc.

Plot 9, The Embarcadero - San Francisco, California
415-441.1680 fax 415-441.0277



WEST EXTERIOR ELEVATION (EAST OPP. HAND)
A3.3 SCALE: 1/2" = 1'-0"
X-ELEVATION.DWG

SYMBOLS LEGEND
 ----- INDICATES MISSING HISTORIC MATERIAL. REPLACE OR REINSTALL IN RECONSTRUCTION.

NO.	DESCRIPTION	DATE
REVISIONS		

KENNEY COTTAGE
 HISTORIC AND EXISTING CONDITIONS
 1719 UNIVERSITY AVENUE
 BERKELEY, CALIFORNIA

SHEET TITLE
 EXTERIOR ELEVATION

ISSUANCE
 100% DOCUMENTATION DRAWINGS

DATE
 June 20, 2002

PROJ. NO. 02063	
DRAWN J/K	
CHECKED J/K	

DRAWING NO.
A3.3
 SHEET 7 OF 9